



# Collard Drive Sanitary Pumping Station (SPS) Upgrades

## PUBLIC WORKS DIVISION



### PROJECT

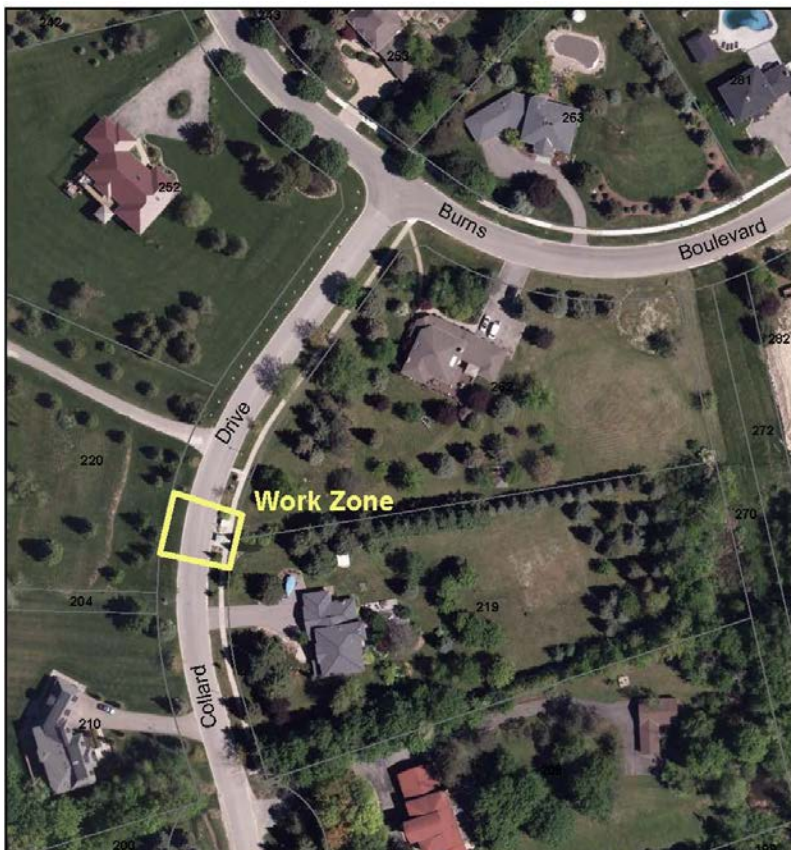
Township contract forces will be working on the SPS located at 219B Collard Drive in King City

### WHY

Township Operations has been experiencing operational difficulties at this location and the Engineering Department has determined that upgrades to the SPS are required

### WHERE

These works will be taking place at the SPS location indicated below.



### IMPACTS

Through traffic on Collard Drive will be available for the majority of the duration of the Project. There will be a need for daily road closures and these are delineated below. The Township will be posting signs regarding the daily road closures at the extents of Collard Drive.

### WHEN

Works will commence on site starting October 01 and will progress through to approximately December 01<sup>st</sup>. Through traffic shall be maintained throughout the bulk of the works however there will be daily road closures from approximately October 24<sup>th</sup> through to November 12<sup>th</sup>.

### CONTACTS

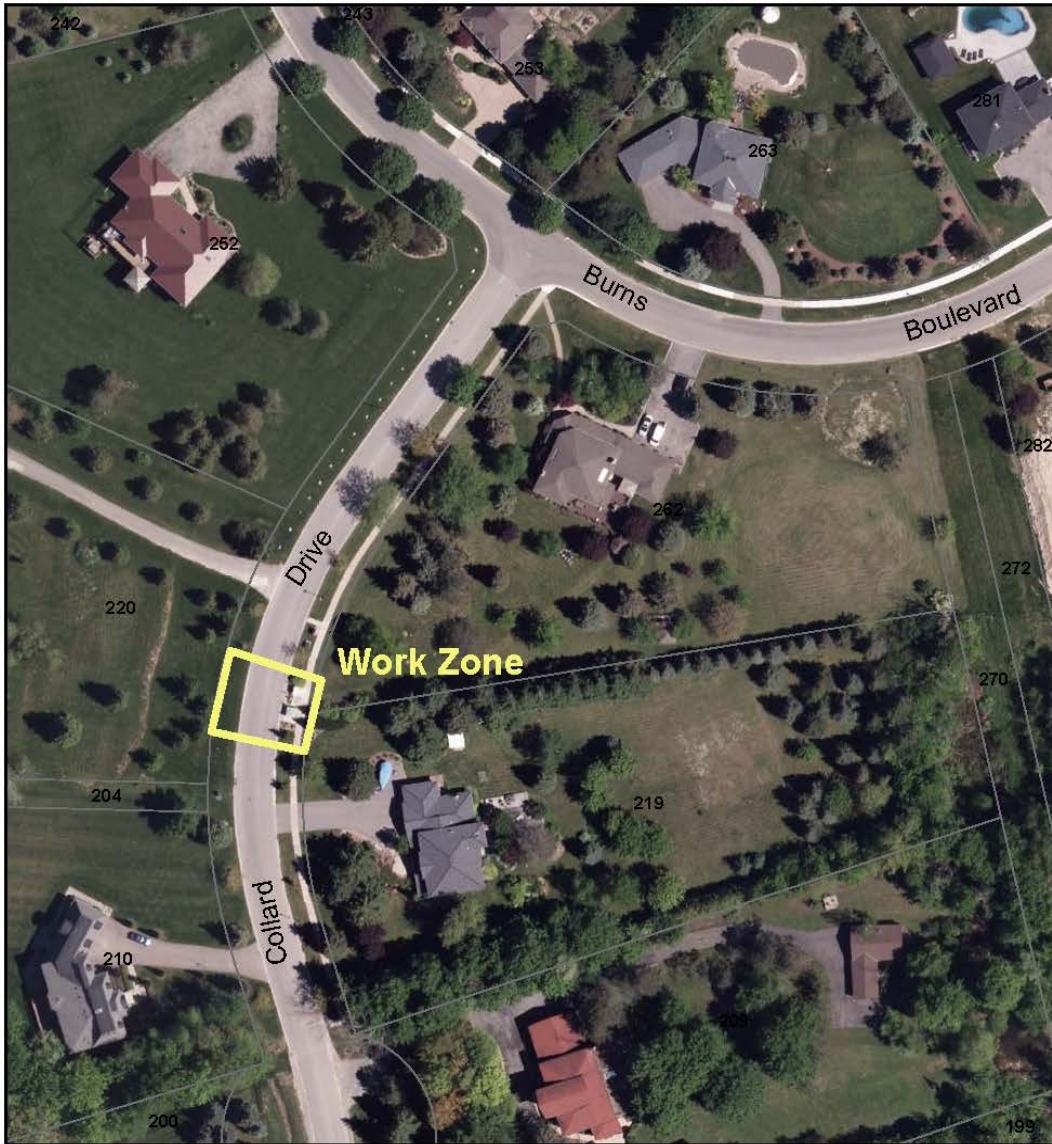
#### King Township

Name: John Vandenberg

Title: Environmental Project Manager

Phone: 905-833-4059

Email: [jvandenberg@king.ca](mailto:jvandenberg@king.ca)



**Collard Drive SPS Site**



Coordinate System: NAD 1983 UTM Zone 17N  
Projection: Transvers Mercator  
Units: Meters  
Ortho Photo 2017  
June 2018  
Township of King GIS

1 cm = 13 meters