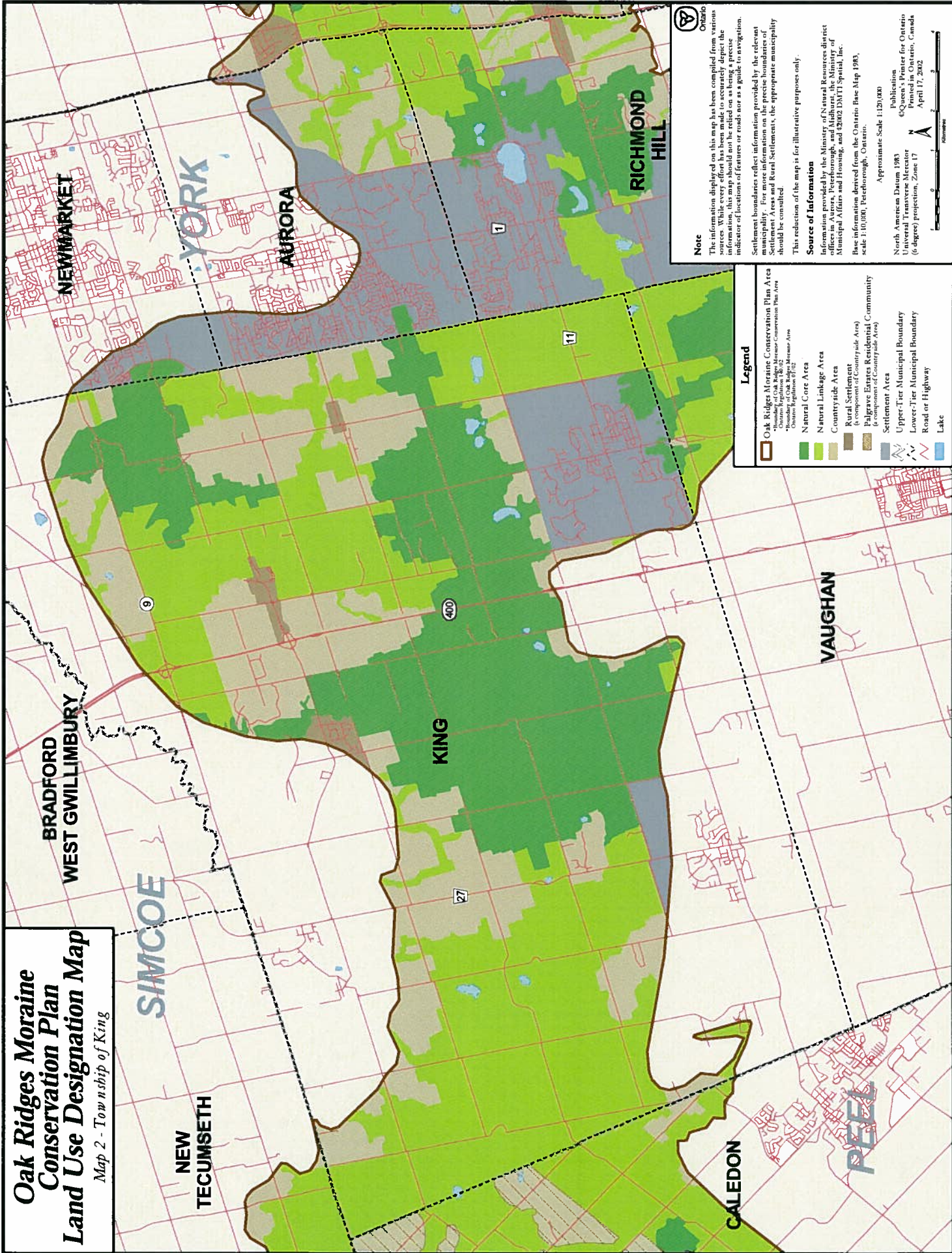


# Oak Ridges Moraine Conservation Plan Land Use Designation Map

Map 2 - Township of King



**Legend**

- Oak Ridges Moraine Conservation Plan Area  
Ontario Regulation 82/02  
Ontario Regulation 82/02  
Ontario Regulation 82/02
- Natural Core Area
- Natural Linkage Area
- Countryside Area
- Rural Settlement  
(a component of Countryside Area)
- Palgrave Estates Residential Community  
(a component of Countryside Area)
- Settlement Area
- Upper-Tier Municipal Boundary
- Lower-Tier Municipal Boundary
- Road or Highway
- Lake

**Note**

The information displayed on this map has been compiled from various sources. While every effort has been made to accurately depict the information, this map should not be relied on as being a precise indicator of locations of features or roads nor as a guide to navigation.

Settlement boundaries reflect information provided by the relevant municipality. For more information on the precise boundaries of Settlement Areas and Rural Settlements, the appropriate municipality should be consulted.

This reduction of the map is for illustrative purposes only.

**Source of Information**

Information provided by the Ministry of Natural Resources district offices in Aurora, Peterborough, and Midhurst; the Ministry of Municipal Affairs and Housing, and 4262 DMT Spatial, Inc.

Base information derived from the Ontario Base Map 1983, scale 1:10,000, Peterborough, Ontario.

Approximate Scale 1:20,000

North American Datum 1983  
 Publication  
 © Queen's Printer for Ontario  
 Universal Transverse Mercator  
 (6 degree) projection, Zone 17  
 April 17, 2002